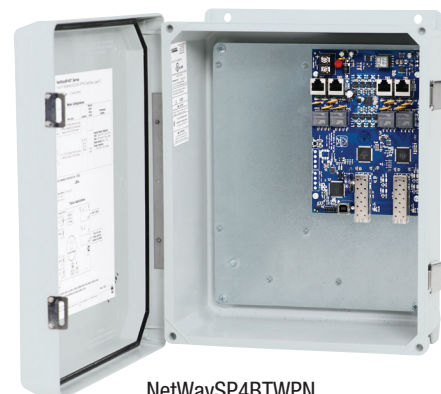


## NetWaySP4BTWPN

### 4-port Outdoor Hardened 4PPoE (802.3bt) Switch

Altronix NetWaySP4BTWPN supports up to 90W per port (320W total power) for deploying the latest high-powered IP devices in remote locations. It is equipped with two (2) 1Gb SFP ports to transmit data at long distances and four (4) 802.3bt compliant Ethernet ports. NetWaySP4BTWPN accommodates single/multi-mode fiber or composite cable (fiber+copper) to simultaneously deliver power and data from NetWay Spectrum head-end media converters/injectors. Embedded LINQ Technology allows to monitor, control, and report power and diagnostics from anywhere.



NetWaySP4BTWPN

#### Key Features

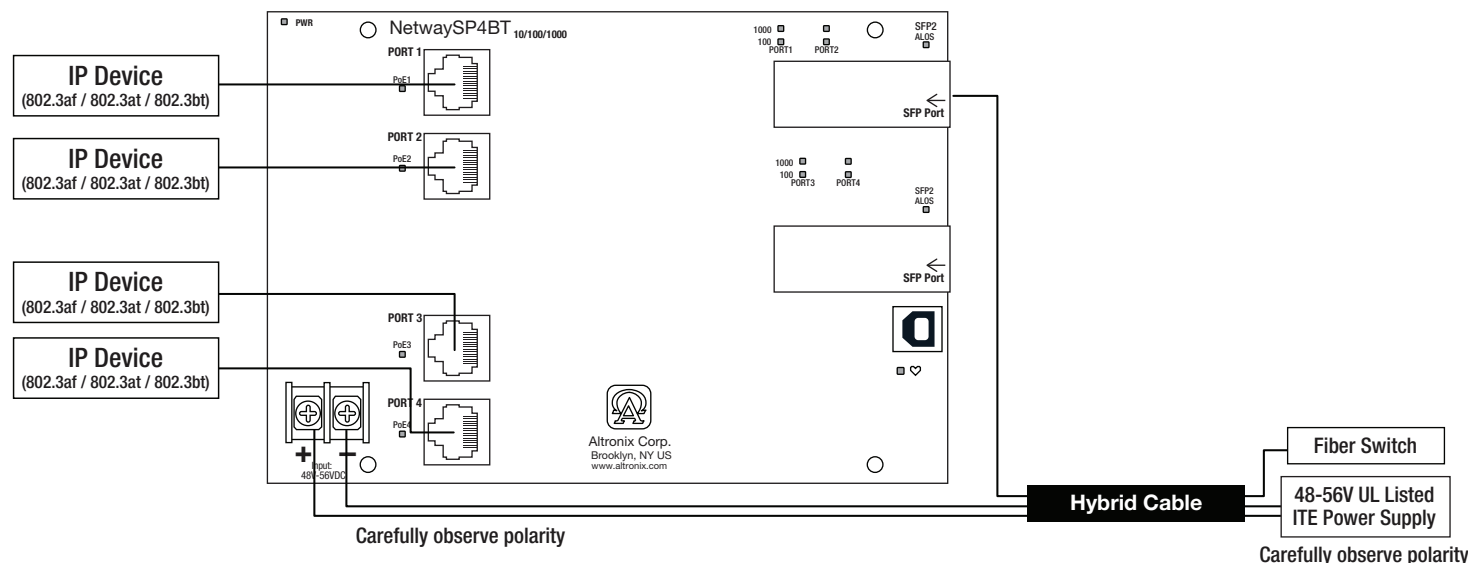
- External 48-55V UL Listed ITE power supply required
  - IEEE 802.3af, 802.3at, 802.3bt compliant
  - Four (4) 10/100/1000 Mbps Ethernet ports rated at 90W each (limited to 320W total power)
  - Two (2) Gigabit SFP ports
  - PoE activity LED indicators
  - VLAN (Virtual Local Area Networks) subnetwork allows for the grouping together of devices for improved network traffic and higher security
  - CE European Conformity
  - NEMA 4/4X, IP66-11 enclosure
- LINQ Technology:
- Remote network management allows for camera/device reset and diagnostic monitoring
  - Provides local and/or remote access to critical information via LAN/WAN
  - Email and Windows Dashboard Alert notifications report real-time events
  - Event log tracks history

#### Similar products

<b>NetWaySP4BTWPX</b>	Outdoor 4-port Hardened 4PPoE Switch with Integral Power in NEMA 4/4X, IP66-11 enclosure which accommodates stand-by batteries
<b>NetWaySP4BTWP</b>	Outdoor 4-port Hardened 4PPoE Switch with Integral Power in NEMA 4/4X, IP66-11 enclosure
<b>NetWaySP4BTX</b>	Indoor 4-port Hardened 4PPoE Switch in NEMA 1 Rated indoor enclosure
<b>NetWaySP4BTPL</b>	4-port Hardened 4PPoE Switch with Integral Power on a Backplane
<b>NetWaySP4BTB</b>	4-port Hardened 4PPoE Switch (board only)

#### Lifetime Warranty

### Typical Composite (Fiber + Copper) Application



### Specifications

**Input** 48V-57V (UL Listed ITE power supply)

**Output** Four (4) 10/100/1000 Mbps Ethernet ports rated at 90W each (limited to 320W total power) IEEE 802.3af, 802.3at, 802.3bt compliant

**SFP Ports:** Two (2) Gigabit SFP ports

**Ethernet Ports:** Four (4) 10/100/1000 Mbps ports  
Connectivity: RJ45, auto-crossover  
Wire type: 4-pair CAT5e or higher structured cable  
Speed: 10/100/1000 Mbps, half/full duplex, auto negotiation

#### Indicators (LED)

Individual PoE On LEDs for each port  
Individual IP Link status, 10/100/1000 Base-T/active LEDs for each port  
ALOS LED indicates fiber connection for SFP port  
Heartbeat LED indicates proper operation of the unit

#### LINQ Technology:

Remote network management allows for camera/device reset and diagnostic monitoring  
Provides local and/or remote access to critical information via LAN/WAN  
Email and Windows Dashboard Alert notifications report real-time events  
Event log tracks history

#### VLAN:

Multiple management VLAN assignment  
802.1Q Tagged VLAN  
Up to 10 VLAN groups. ID Range 2-4095.

#### Agency Listings

CE European Conformity

#### Physical and Environmental

##### Dimensions (H x W x D)

Enclosure: 13.31" x 11.31" x 5.59"  
(338.1mm x 287.3mm x 142mm)  
Shipping: 20.25" x 12.5" x 7.25"  
(514.4mm x 317.5mm x 184.2mm)

NEMA 4/4X, IP66-11 Rated enclosure for outdoor use

##### Weight (approx.)

Product: 9.5 lb. (4.3 kg)  
Shipping: 10.9 lb. (4.9 kg)

##### Temperature

**Operating:**  
240W: -40°C to 55°C (-22°F to 131°F)  
180W: -40°C to 65°C (-22°F to 149°F)  
150W: -40°C to 75°C (-22°F to 167°F)  
**Storage:** -40°C to 85°C (-22°F to 185°F)

**Relative Humidity** 85% +/- 5%  
**Operating Altitude:** -304.8 to 2,000m

#### Lifetime Warranty

Altronix Corporation | 140 58th St | Brooklyn, NY 11220 USA

phone: +1 718.567.8181 | fax: +1 718.567.9056 | email: info@altronix.com | www.altronix.com



## NetWaySP4BTWPN

4-port Outdoor Hardened 4PPoE (802.3bt) Switch



### Power Sourcing Equipment and Accessories (order separately)



**NetWaySP4PX - Ethernet to Fiber Media Converter with Integral Power Supply/Charger**  
4-port Ethernet to Fiber Media Converter for applications utilizing composite (power + copper) or conventional cabling  
Unit provides power up to 120W per port (480W total power). Four (4) 1Gb SFP ports.



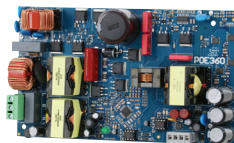
#### SFP Modules - Hot Pluggable Transceivers

P1MM	Multi-Mode SFP Module for distances up to 550m
P1SM10	Single-Mode SFP Module for distances up to 10km
P1AB2K	Single Strand SFP Module for distances up to 2km
P1GCE	Copper SFP Module for distances up to 100m



#### NetWaySP1A

**Ethernet over Fiber Media Converter/Repeater for Applications Requiring an Additional SFP (Fiber) Port**  
NetWaySP1A PoE powered media converter/repeater converts 10/100/1000 Mbps to Fiber (1000Base-X/SX/LX).



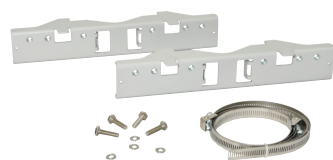
#### PoE Power Supplies

##### POE240 - 240W Power Supply/Charger

Provides 240W for NetWay Spectrum switches.  
It also features a built-in charger for Lithium Iron Phosphate or sealed lead acid batteries.

##### POE360/POE367 - 360W Power Supply/Charger

Provides 360W for NetWay Spectrum switches.  
It also features a built-in charger for sealed lead acid or gel type batteries.



#### PMK1 - Pole Mount Kit

PMK1 pole mount kit is designed to simplify installation of outdoor units.  
It accommodates 2" - 8" (diameter) poles.

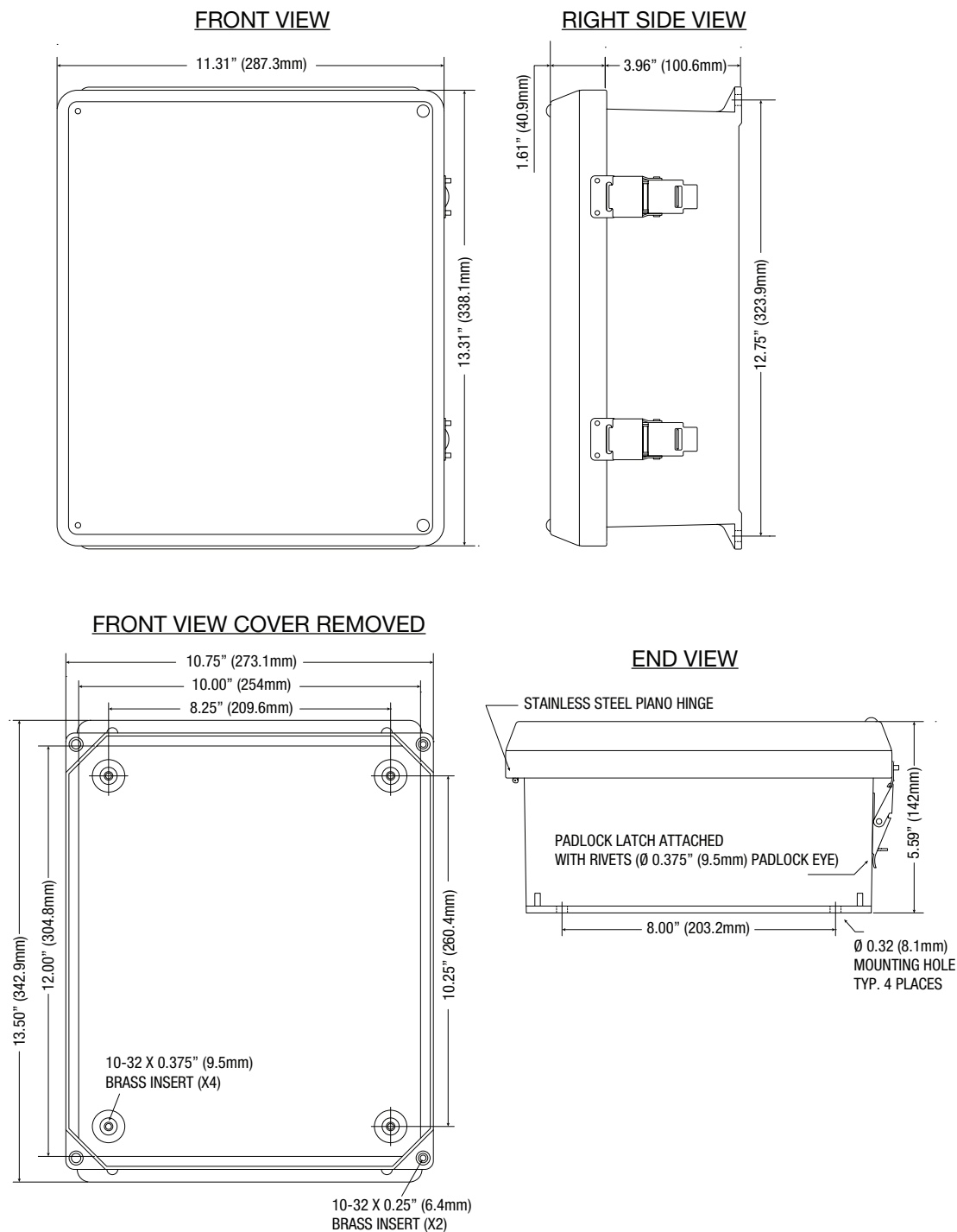
#### Lifetime Warranty

Altronix Corporation | 140 58th St | Brooklyn, NY 11220 USA  
phone: +1 718.567.8181 | fax: +1 718.567.9056 | email: info@altronix.com | www.altronix.com

### Dimensions and Drawing

Dimensions (H x W x D approximate)

13.31" x 11.31" x 5.59" (338.1mm x 287.3mm x 142mm)



### Lifetime Warranty

Altronix Corporation | 140 58th St | Brooklyn, NY 11220 USA

phone: +1 718.567.8181 | fax: +1 718.567.9056 | email: info@altronix.com | www.altronix.com