

NetWaySP3WP

3-port Outdoor Hardened PoE Switch with Integral Power

Altronix NetWaySP3WP Outdoor PoE+ Hardened Switch provides a 1Gb SFP port and two (2) 60W ports and a single 30W port. Cameras/edge devices may be located up to 100m from the unit. Embedded LINQ Technology allows you to monitor, control and report power and diagnostics from anywhere.



NetWaySP3WP

Key Features

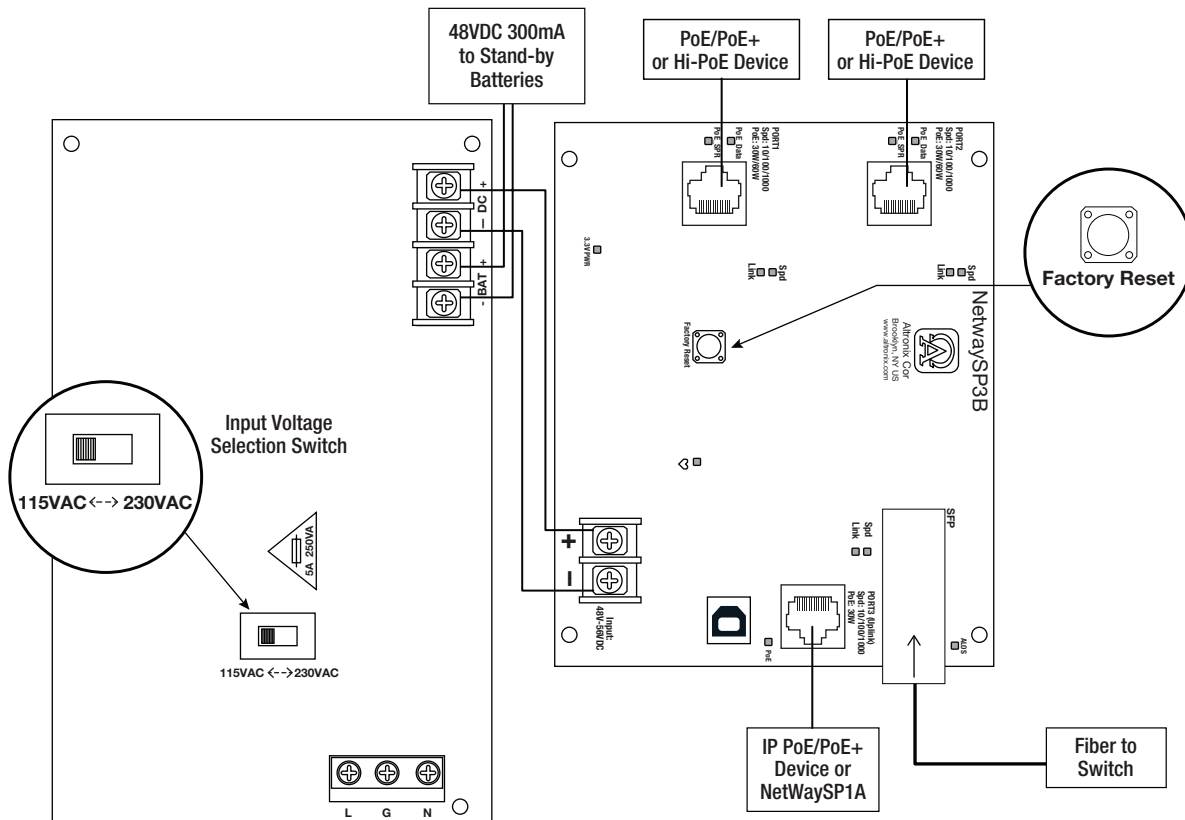
- One (1) Gigabit SFP port
- 120W total power:
 - Two (2) 60W ports (PoE / PoE+ / Type 3 4PPoE)
 - One (1) 30W port (PoE / PoE+)
- 10/100/1000 Mbps each port
- IEEE 802.3af (15W), IEEE 802.3at (30W) and IEEE 802.3bt (60W) compliant.
- PoE activity LED indicators
- NEMA4/4X, IP66 Rated enclosure for outdoor use
- Built-in charger for sealed lead acid or gel type batteries
- Automatic switch over to stand-by battery when AC fails
- UL Listed in the U.S. and Canada
- CE European Conformity
- Lifetime Warranty

Similar products

NetWaySP3WPX	Outdoor 3-port PoE+ Hardened Switch in NEMA 4/4X, IP66-11 enclosure which accommodates stand-by batteries
NetWaySP3WP	Outdoor 3-port PoE+ Hardened Switch in NEMA 4/4X, IP66-11 enclosure
NetWaySP3WPN	Outdoor 3-port PoE+ Hardened Switch only in NEMA 4/4X, IP66-11 enclosure
NetWaySP3X	Indoor 3-port PoE+ Hardened Switch in NEMA 1 Rated indoor enclosure
NetWaySP4PL	3-port PoE+ Hardened Switch with Integral Power on a Backplane

Lifetime Warranty

Typical Application



Accessories (order separately)



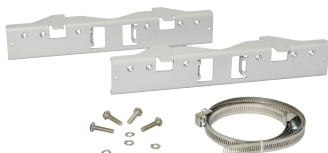
SFP Modules - Hot Pluggable Transceivers

P1MM	Multi-Mode SFP Module for distances up to 550m
P1SM10	Single-Mode SFP Module for distances up to 10km
P1AB2K	Single Strand SFP Module for distances up to 2km
P1GCE	Copper SFP Module for distances up to 100m



NetWaySP1A

Ethernet over Fiber Media Converter/Repeater for Applications Requiring an Additional SFP (Fiber) Port
NetWaySP1A PoE powered media converter/repeater converts 10/100/1000 Mbps to Fiber (1000Base-X/SX/LX).



PMK1 - Pole Mount Kit

PMK1 pole mount kit is designed to simplify installation of outdoor units. It accommodates 2" - 8" (diameter) poles.

Lifetime Warranty



NetWaySP3WP

3-port Outdoor Hardened PoE Switch with Integral Power



Specifications

Input

Voltage	115VAC, 60Hz, 2.5A or 230VAC, 50/60Hz, 1.3A
Input Fuse	5A/250V

Power Output

Maximum Power	120W total power: Two (2) 60W ports (PoE / PoE+ / Type 3 4PPoE) One (1) 30W port (PoE / PoE+) 10/100/1000 Mbps each port IEEE 802.3af (15W), IEEE 802.3at (30W) and IEEE 802.3bt (60W) compliant Integral surge protection
---------------	--

Fiber Ports: One (1) Gigabit SFP port

Ethernet Ports: Three (3) 10/100/1000 Mbps ports
Connectivity: RJ45, auto-crossover
Wire type: 4-pair CAT5 or better structured cable
Distance: up to 100m
Speed: 10/100/1000 Mbps,
half/full duplex, auto negotiation

Battery Charging

Type	Sealed lead acid or gel type
Failover	Upon AC loss, instantaneous
Batteries are sold separately. Separate ventilated enclosure is required	

LINQ Technology:

Remote network management allows for camera/device reset and monitoring
Provides local and/or remote access to critical information via LAN/WAN
Email and Windows Dashboard Alert notifications report real-time diagnostics
Event log tracks history

Indicators (LED)

Individual PoE On LEDs for each port
Individual IP Link status, 10/100Base-T/active LEDs for each port
ALOS LED indicates fiber connection for SFP port
Heartbeat LED indicates proper operation of the unit

Agency Listings

UL/cUL	UL60950-1 (Information Technology Equipment) UL60950-22 (Information Technology Equipment to be installed Outdoors)
CE	European Conformity

Physical and Environmental

Dimensions (H x W x D)

Enclosure:	13.31" x 11.31" x 5.59" (338.1mm x 287.3mm x 142mm)
Shipping:	20.25" x 12.5" x 7.25" (514.4mm x 317.5mm x 184.2mm)

NEMA 4/4X, IP66-11 Rated enclosure for outdoor use

Weight (approx.)

Product:	10.32 lb. (4.68 kg)
Shipping:	11.7 lb. (5.3 kg)

Temperature

Operating:	
60W:	- 40°C to 75°C (- 40°F to 167°F)
75W:	- 40°C to 70°C (- 40°F to 158°F)
100W:	- 40°C to 55°C (- 40°F to 131°F)
120W:	- 40°C to 45°C (- 40°F to 113°F)
Storage:	- 40°C to 85°C (- 40°F to 185°F)

Relative Humidity 85% +/- 5%

BTU/Hr (approx.) 61 BTU/Hr.

Operating Altitude: - 304.8 to 2,000m

Lifetime Warranty

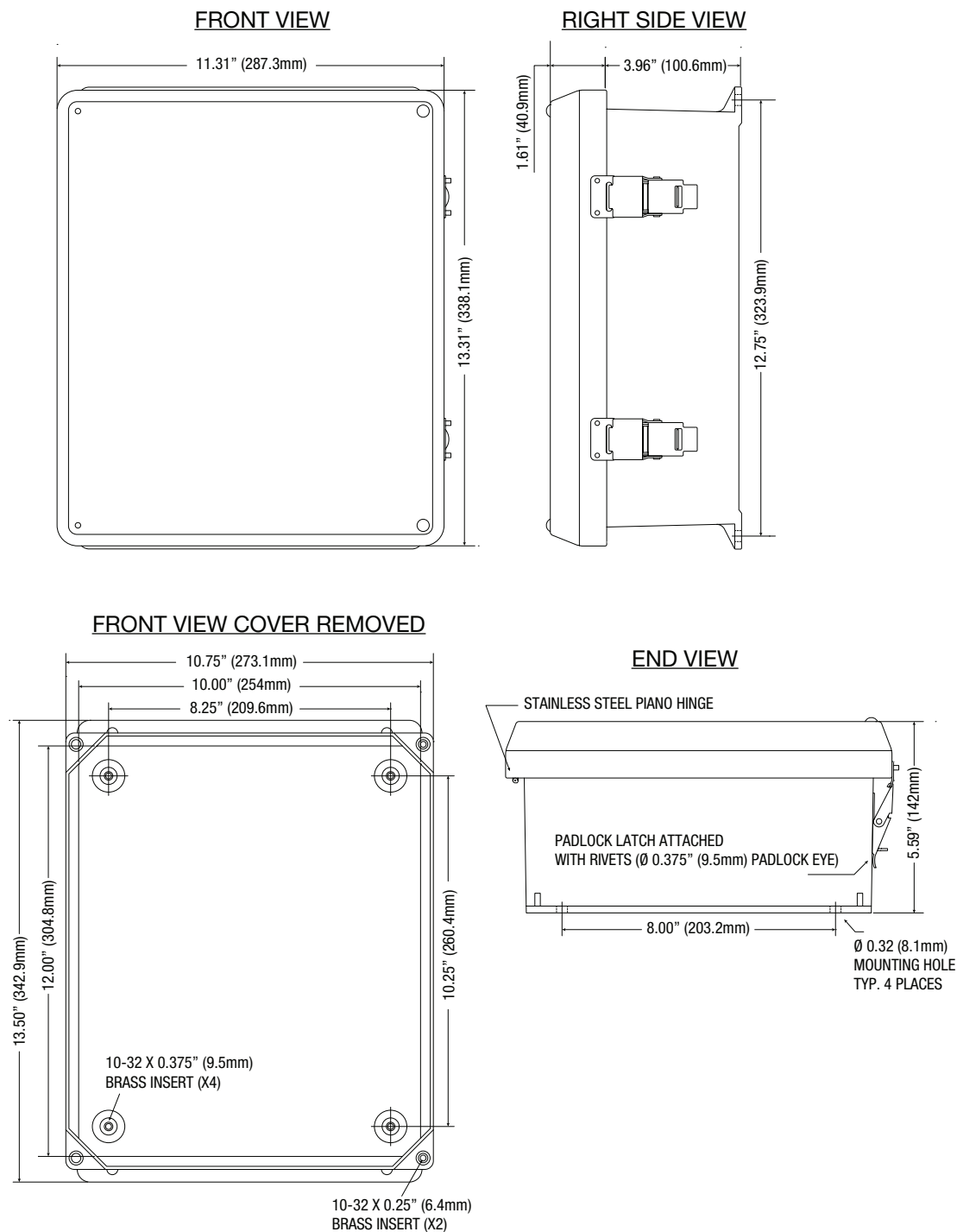
Altronix Corporation | 140 58th St | Brooklyn, NY 11220 USA

phone: +1 718.567.8181 | fax: +1 718.567.9056 | email: info@altronix.com | www.altronix.com

Dimensions and Drawing

Dimensions (H x W x D approximate)

13.31" x 11.31" x 5.59" (338.1mm x 287.3mm x 142mm)



Lifetime Warranty