

## NetWay4EWP

### 4-port PoE+ Hardened Switch

Altronix NetWay4EWP Outdoor PoE+ Hardened Switch provides a 1Gb SFP port and four (4) PoE+ (30W) ports. Cameras/edge devices may be located up to 100m from the unit. Embedded LINQ Technology allows you to monitor, control, and report power and diagnostics from anywhere.



NetWay4EWP

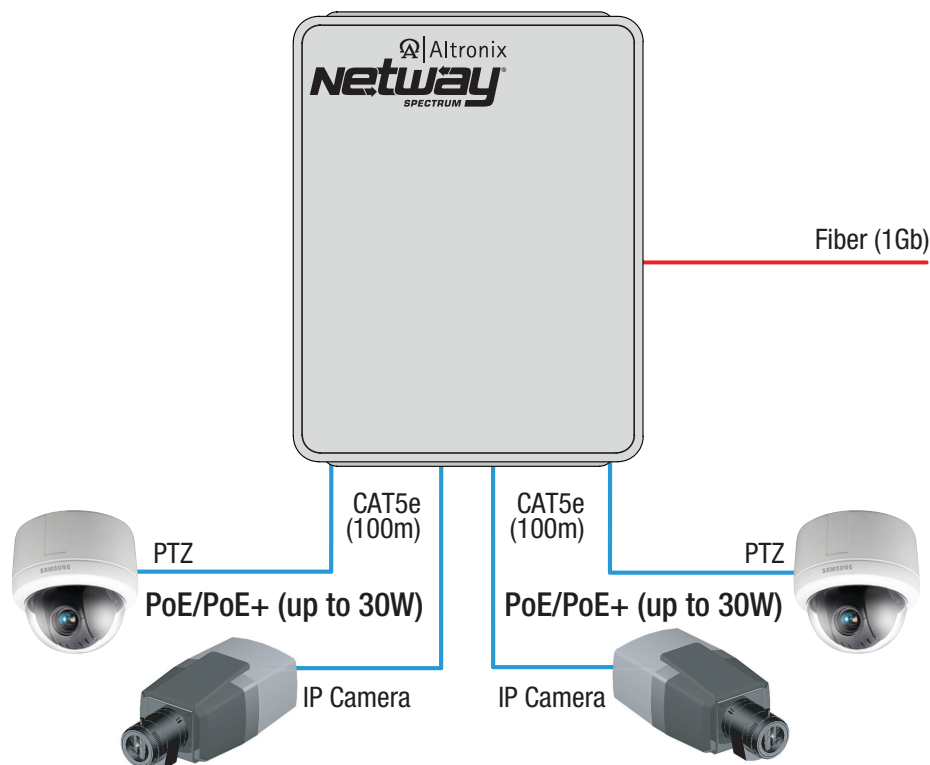
#### Key Features

- Four (4) 10/100/1000 Mbps PoE/PoE+ (up to 30W) ports
- IEEE 802.3af (15W) and IEEE 802.3at (30W) compliant
- 120W total power
- One (1) Gigabit SFP port
- NEMA4/4X, IP66 Rated enclosure for outdoor use
- Built-in charger for sealed lead acid or gel type batteries
- Automatic switch over to stand-by battery when AC fails
- PoE activity LED indicators
- UL Listed in the U.S. and Canada
- CE European Conformity
- Lifetime Warranty

#### Similar products

<b>NetWay4EWPX</b>	Outdoor 4-port PoE+ Hardened Switch in NEMA 4/4X, IP66-11 enclosure which accommodates stand-by batteries
<b>NetWay4EWPN</b>	Outdoor 4-port PoE+ Hardened Switch only in NEMA 4/4X, IP66-11 enclosure
<b>NetWay4EPL</b>	4-port PoE+ Hardened Switch with Integral Power on a Backplane
<b>NetWay4EX</b>	Indoor 4-port PoE+ Hardened Switch in NEMA 1 Rated indoor enclosure
<b>NetWay4EB</b>	4-port PoE+ Hardened Switch (board only)

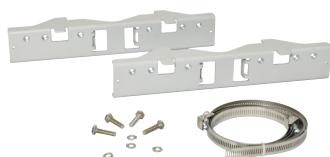
#### Lifetime Warranty

**Typical Application****Accessories (order separately)****SFP Modules - Hot Pluggable Transceivers**

P1MM	Multi-Mode SFP Module for distances up to 550m
P1SM10	Single-Mode SFP Module for distances up to 10km
P1AB2K	Single Strand SFP Module for distances up to 2km
P1GCE	Copper SFP Module for distances up to 100m

**NetWaySP1A**

Ethernet over Fiber Media Converter/Repeater for Applications Requiring an Additional SFP (Fiber) Port  
NetWaySP1A PoE powered media converter/repeater converts 10/100/1000 Mbps to Fiber (1000Base-X/SX/LX).

**PMK1 - Pole Mount Kit**

PMK1 pole mount kit is designed to simplify installation of outdoor units. It accommodates 2" - 8" (diameter) poles.

**Lifetime Warranty**



## NetWay4EWP

4-port PoE+ Hardened Switch



### Specifications

#### Input

Voltage	115VAC, 60Hz, 2.5A or 230VAC, 50/60Hz, 1.3A
Input Fuse	5A/250V

#### Power Output

Maximum Power	Four (4) 10/100/1000 Mbps PoE/PoE+ (up to 30W) ports or IEEE 802.3af (15W) and IEEE 802.3at (30W) compliant 120W total power Integral surge protection
Fiber Port:	One (1) Gigabit SFP port

#### Indicators (LED)

Individual PoE On LEDs for each port  
Individual IP Link status, 10/100Base-T/active LEDs for each port  
ALOS LED indicates fiber connection for SFP port  
Heartbeat LED indicates proper operation of the unit

#### LINQ Technology:

Remote network management allows for camera/device reset and monitoring  
Provides local and/or remote access to critical information via LAN/WAN  
Email and Windows Dashboard Alert notifications report real-time diagnostics  
Event log tracks history

#### Battery Charging

Type Sealed lead acid or gel type  
Failover Upon AC loss, instantaneous  
Batteries are sold separately  
Separate ventilated enclosure is required

### Agency Listings

UL/cUL	UL60950-1 (Information Technology Equipment) UL60950-22 (Information Technology Equipment to be installed Outdoors)
CE	European Conformity

### Physical and Environmental

#### Dimensions (H x W x D)

Enclosure:	13.31" x 11.31" x 5.59" (338.1mm x 287.3mm x 142mm)
Shipping:	20.25" x 12.5" x 7.25" (514.4mm x 317.5mm x 184.2mm)

NEMA 4/4X, IP66-11 Rated enclosure for outdoor use

#### Weight (approx.)

Product:	10.32 lb. (4.68 kg)
Shipping:	11.7 lb. (5.3 kg)

#### Temperature

Operating:	
60W:	– 40°C to 75°C (– 40°F to 167°F)
75W:	– 40°C to 70°C (– 40°F to 158°F)
100W:	– 40°C to 55°C (– 40°F to 131°F)
120W:	– 40°C to 45°C (– 40°F to 113°F)
Storage:	– 40°C to 85°C (– 40°F to 185°F)

Relative Humidity 85% +/- 5%

BTU/Hr (approx.) 61 BTU/Hr.

Operating Altitude: – 304.8 to 2,000m

### Lifetime Warranty

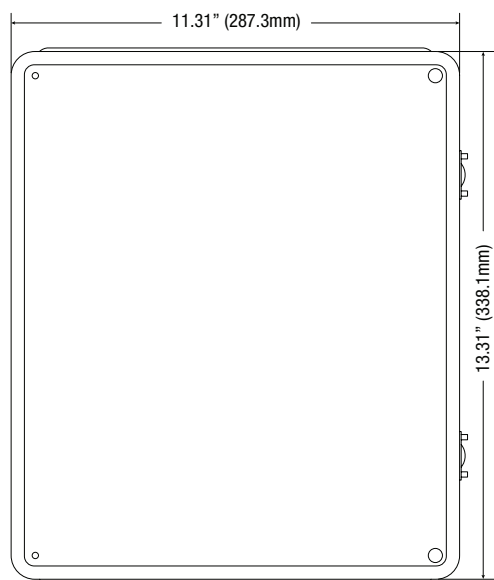
Altronix Corporation | 140 58th St | Brooklyn, NY 11220 USA  
phone: +1 718.567.8181 | fax: +1 718.567.9056 | email: info@altronix.com | www.altronix.com

## Dimensions and Drawing

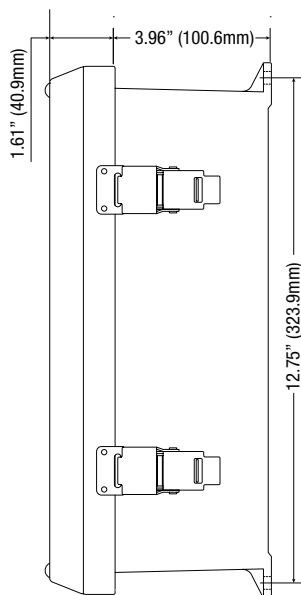
Dimensions (H x W x D approximate)

13.31" x 11.31" x 5.59" (338.1mm x 287.3mm x 142mm)

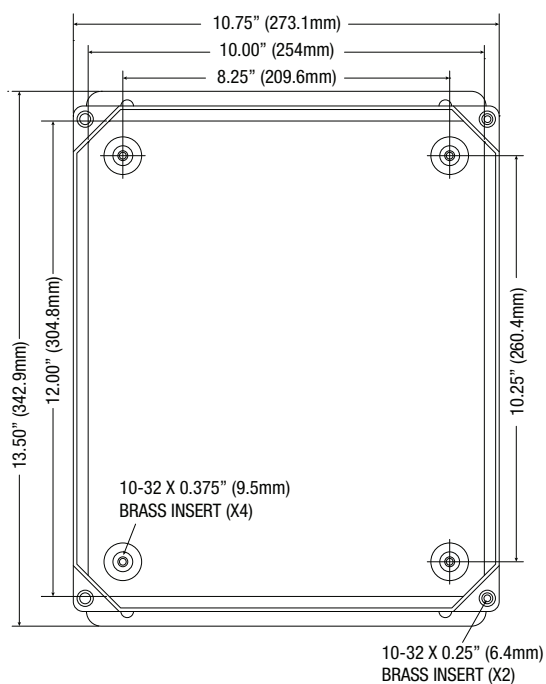
**FRONT VIEW**



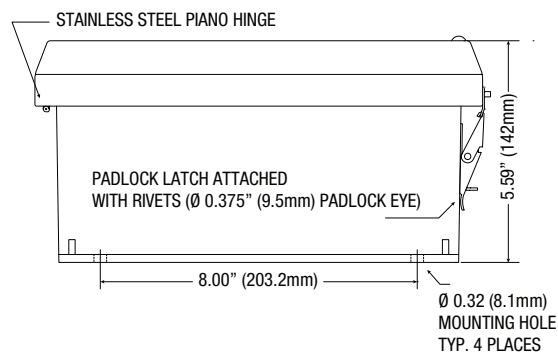
**RIGHT SIDE VIEW**



**FRONT VIEW COVER REMOVED**



**END VIEW**



## Lifetime Warranty

Altronix Corporation | 140 58th St | Brooklyn, NY 11220 USA

phone: +1 718.567.8181 | fax: +1 718.567.9056 | email: info@altronix.com | www.altronix.com